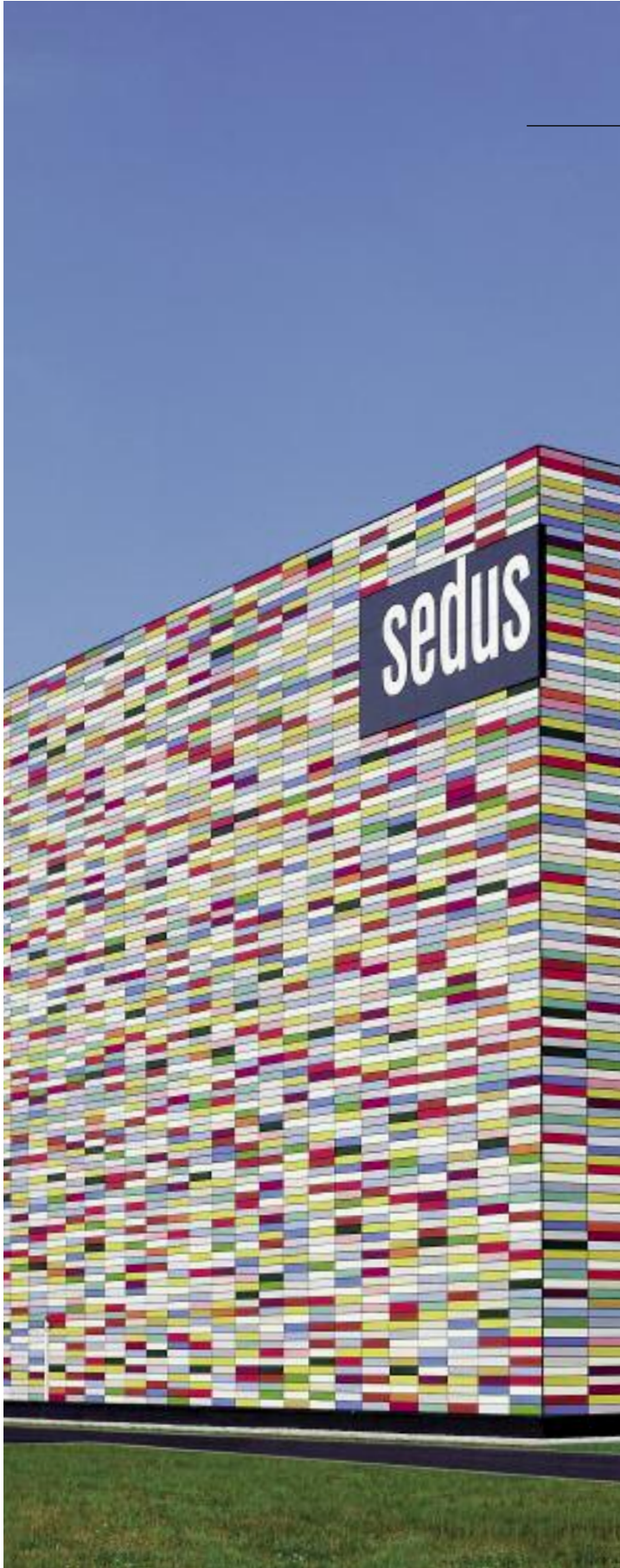


# Office furniture





## Welcome to Sedus!

---

Sedus Stoll AG (founded in 1871) is one of the leading manufacturers of office furniture, office seating, conference and break-out furniture.

The company's headquarters and main production facilities are located in Waldshut/Dogern, in South Germany's Black Forest. The Sedus brand is represented in more than 40 countries around the world.

The company's strength lies in the balanced combination of innovative product design, high quality, highly durable designs and materials, a sense of environmental responsibility, and the ergonomic features of its products.

[www.sedus.com](http://www.sedus.com)  
[www.place2point5.com](http://www.place2point5.com)

## A passion for work. A heart for the environment.

---

Ecology and environmental protection are elements of the corporate philosophy that Sedus pursues each and every day. It applies to our work processes, the demands we make of suppliers and how we handle materials. We believe that aside from a work method which preserves resources, recycling-orientated product design, using ecologically tested materials and energy-saving production, what really counts is the quality of the product. After all, there is nothing better for the environment than a durable product

## crossline

With crossline, Sedus has now opened the door to a whole new sitting experience. The centre piece is the innovative Similar-Plus mechanism, which transforms sitting to a "perfect balance" experience. In addition, the crossline family impresses with its stylish design. No matter if in an open-plan office or in small office units, the elegant style is eye-catching in any surroundings. Design: Markus Dörner





## yeah!

The Sedus yeah! range offers not only superlative value for money but also innovative technology. The swivel chair, which is fitted with the "Similar" mechanism, seat tilt and sliding seat, also has an innovative quick adjustment feature.

This allows the backrest pressure to be set in a matter of seconds – making yeah! perfect for multi-user workstations where users of differing heights and weights might be working.

Design: Michael Kläsener

## netwin

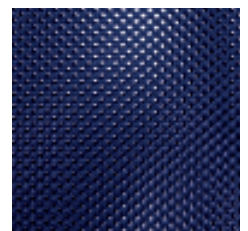
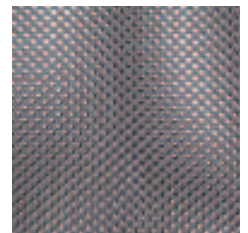
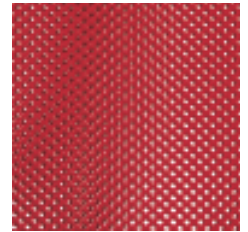
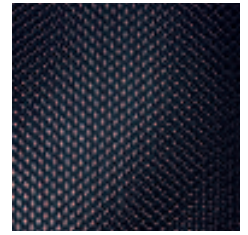
Sedus netwin is an office chair family comprising comfortable task chairs and conference chairs. It owes its unique character to the double backrest membrane and the generously dimensioned seat for exceptionally comfortable sitting. netwin offers an unrivalled combination of ergonomics, workmanship and value for money.

It epitomises design that you feel at home with, bridging the gap between "living" and "working".

Design: Michael Kläsener









## early bird

Who's first to smile in the morning? Sedus early bird – the appealing office swivel chair offering perfect technology, first-class ergonomics and durability, numerous combinations of features and clear-cut design. The especially large opening angle of 32° offers the user an outstanding degree of comfort. Also in the programme: visitor and conference chairs. Design: Michael Kläsener

## black dot

Sedus black dot is a family of swivel chairs and conference chairs. Quality that lasts plus sophisticated design – combined with a whole range of features. Maximum mobility, thanks to innovative technology like the dorsokinetic mechanism, makes these chairs unique. Freedom of movement is an essential aid to creative thinking. In a new office culture. Offering a new work experience. Self-confident. Proud. Intelligent. Design: Michael Kläsener & Stephan A. Preisig







## mr. charm

Conceived as an ultra-comfortable office swivel chair with a complete range of the latest feature combinations, mr. charm emerges as a real professional at all levels. The many different versions available underline one of the Sedus brand's main strengths: tailor-made and available in the full range of technical and visual features, mr charm ensures perfect, dynamic sitting at the office.

Design: Michael Kläsener

## mr. 24

Control room chairs don't have it easy. At the end of each eight-hour shift of continuous use, the chair gets a new "owner", who not only readjusts the chair height and armrests – the backrest pressure and seat depth are also adapted to individual requirements. Sedus mr. 24 has been developed with the toughest working conditions in mind: namely round-the-clock use. It knows "no fear", taking weights of up to 200 kg in its stride.

Design: Michael Kläsener





## open mind

---

The innovative backrest frame, cast in one piece, and the highly flexible membrane covering define the clarity of form. Sedus open mind offers outstanding ergonomic features and guarantees optimal sitting comfort. There are an enormous variety of technical features to choose from. This aesthetic swivel chair can also be used in combination with the open up cantilever chair. Design: Mathias Seiler

## open up

---

Sitting, standing, lying on the job: Sedus open up makes it possible. The "Similar" mechanism provides a large reclining angle of up to 45°, and so comes very close to a lying position. The ottoman, a legrest on castors or gliders, completes the lying posture. The adjustable "work assistant" is perfect for working with a notebook, for example. Fully extended, it becomes a lectern. Design: Mathias Seiler







## silent rush

---

As a swivel or lounge chair, silent rush responds to the hustle and bustle of everyday working life. With its language of form and luxurious upholstery, silent rush is an oasis of calm in the midst of the storm. A haven where you can retreat and concentrate. It is a source of strength and comfort. The chair for those who wish to be in greater command, calmer and more efficient – whilst still remaining in the thick of things. Design: Mathias Seiler and Thilo Schwer

## my way

---

Uncompromising comfort was the focus of attention when the my way swivel and conference chairs were designed. The visual harmony and balance of their striking upholstery catches the eye immediately. Despite so much comfort, the elegant executive chair displays great agility. Lean back and enjoy the full benefit of optimally coordinated movements of seat, backrest and armrests. Design: Michael Kläser



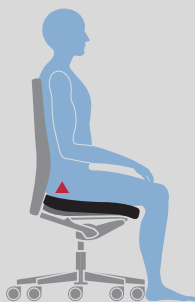
**Today we take so much for granted.**

But it took initiative, ideas and innovations for the products to function and look as they do today. Time and time again, the quest for the origin of this perfection leads to the German Rhine, Waldshut. The first-ever sprung swivel chair was developed here. As was the first five-star base with swivel castors. And the dynamic backrest is another Sedus development that still sets the standard internationally to this day. Task chairs with the Similar and Sedo-Lift mechanism are among the most comfortable and reliable in the world.



**Adjustable backrest pressure**

Thanks to the adjustable spring force, the backrest pressure can be individually set according to size and weight and in line with the user's personal sitting preference.



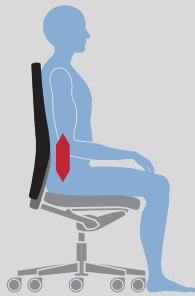
**Seat tilt adjustment**

With the seat tilt adjustment, the normal position of the seat can be changed up to 4° so that the seat can be tilted forwards.



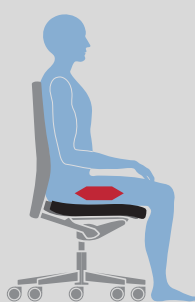
**"Similar" mechanism**

The patented "Similar" mechanism from Sedus guarantees the best sitting comfort. Perfectly adjusted mechanical springs provide extremely well-balanced force distribution during dynamic sitting. The seat and backrest move in complete synchronism with the body.



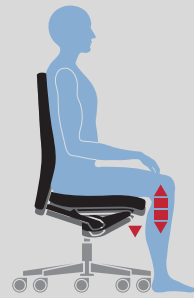
**Height-adjustable backrest**

The height of the backrest can be individually set to suit any user's height and weight and guarantees optimal position of the lumbar support curvature.



**Sliding seat**

The support for the legs can be individually adjusted by pushing the seat cushion forwards or backwards.



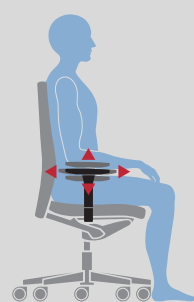
**Sedo-Lift mechanism**

Extremely durable and height-adjustable mechanism that is also non-wearing where there is a frequent change of user. Even in the lowest position, the seat-depth springing provides a "soft landing" when you sit down.



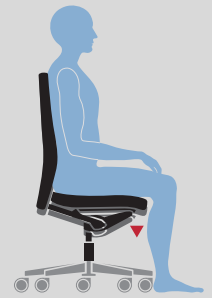
**Height-adjustable lumbar support**

The patented height-adjustable lumbar support inside the backrest cushion always offers considerate support for the lumbar vertebral arch.



**Adjustable armrests**

They enable totally unique adjustment to adapt to the user and to what he/she is currently doing. Some armrests can have their height, width and depth adjusted.



**Mechanical depth springing**

The seat-depth springing provides a pleasant "soft landing" when you sit down, thanks to a mechanical central spring. Even in the lowest position, it assures a "soft landing", which prevents jarring of the spinal column.



**Anatomically shaped seat**

The seat assures the correct sitting position and provides proper support for dynamic sitting. Avoids an unconscious "sliding forward".



**Adjustable headrest**

To relax the neck muscles, several swivel chairs are equipped with adjustable height and tilt headrests.

# Features

	crossline	yeah!	netwin	early bird	black dot	mr. charm	mr. 24	open mind	open up	silent rush	my way
<b>Models</b>											
Swivel chair with medium-high backrest	●	●	●	●	●	●		●	●	●	●
Swivel chair with medium-height backrest and headrest						●		●	●		
Swivel chair with higher backrest		●		●	●	●	●				●
Swivel chair with higher backrest and headrest	●			●		●	●			●	●
<b>Seat mechanism</b>											
"Similar" mechanism		●	●	●	●	●	●	●	●	●	●
"Similar" mechanism with seat tilt adjustment		○	○	○	○	○		○	○		
Similar-Plus mechanism	●										
Similar-Plus mechanism with seat tilt adjustment	○										
<b>Backrest technical features</b>											
Height-adjustable backrest	●	●	●	●	●	●	●	●	●	●	●
Adjustable backrest pressure		●				●					
Height-adjustable lumbar support	●		●	●	●		●	○	○	●	●
Depth-adjustable lumbar support						○	●				●
<b>Seat height adjustment</b>											
Gas lift mechanism	○	○	○	○	○	○		○			
Gas lift mechanism with depth springing (Tplus)									●		
Gas lift mechanism with mechanical depth springing		●	●								
Sedo-Lift mechanism with mechanical depth springing	●			●	●	●	●	●		●	●
<b>Frame versions</b>											
Plastic base in black		●	●								
Aluminium base, powder-coated in black	●	○	○	●	●	●	●	●	●	○	○
Aluminium base, powder-coated in white	○										
Aluminium base, powder-coated in white aluminium	○	○	○	○	○	○		○	○	●	○
Polished aluminium base	○	○	○	○	○	○	○	○	○	○	○
Aluminium base, chromed							○				●
<b>Model colours (mechanism and plastic parts)</b>											
Black	●	●	●	●	●	●	●	●	●	●	●
White	○										
<b>Armrests</b>											
Without armrests	○	○	○	○	○	○		○	○		
Basic plastic armrests		●		●		●		●	●		
Basic plastic armrests with leather finish				○				○	○		
Height-adjustable plastic armrests			●		●						
Aluminium armrests with Softtouch or leather finish						○					
Armrests with integrated leather finish										●	●
2D adjustable armrests					○						
Multifunctional armrests with Softtouch finish	●	○	○	○	○	○	●	○	○		
Multifunctional armrests with gel finish	○	○		○		○		○	○		
Multifunctional armrests with leather finish	○	○		○	○		○	○	○		
<b>Features</b>											
Large seat							○		○		○
Sliding seat	○	○	○	○	○	○	●	○			
Backrest membrane			●					●	●		
Backrest with flat cushion								○	○		
Two-tone upholstery	○	○	○	○	○	○	○	○	○	○	
Fabric insert for the plastic back		○									
Hard castors for soft floors	●	●	●	●	●	●	●	●	●	●	●
Soft castors for hard floors	○	○	○	○	○	○	○	○	○	○	○
<b>Product range</b>											
Cantilever chair	●	●	●	●	●	●		●	●	●	
4-leg model	●	●	●	●	●	●					
Conference swivel chair	●								●		●
Ottoman						●		●	●		
Work assistant									●		

● Standard ○ Optional



[www.sedus.com](http://www.sedus.com)